



## How to set up the Leo Bodnar LBE-1420 GPSDO External Reference Clock with the DG8SAQ VNWA Vector Network Analyzer

A number of VNWA Users would like to use the Leo Bodnar LBE-1420 GPSDO as an External Reference Clock instead of the Internal VNWA TCXO for taking measurements with the VNWA.

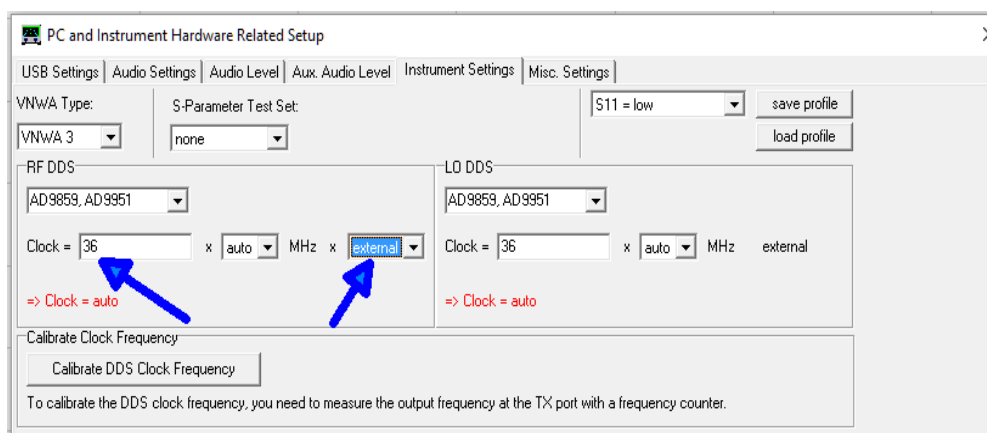
### When does it make sense to use an External High accuracy Reference Clock?

Whilst the Internal VNWA clock is more than sufficient for normal VNWA measurements above 100 MHz, it makes sense to use the SDR-Kits Precision GPSDO Reference clock (or any other high accuracy clock) instead of the Internal VNWA clock for the following measurement scenarios:

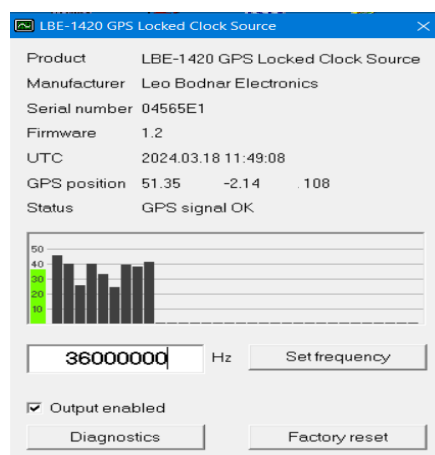
- GPSDO reference clock is required for **high precision frequency measurements**. Please refer the Document [How to properly set the VNWA for use of the VNWA Frequency meter](#) by Kurt Poulsen OZ7OU
- The GPSDO clock is advantageous when measuring **high Q devices** like crystals or crystal filters. In this case it is advised to use low clock frequencies/low clock multipliers (not auto multipliers) for increased frequency resolution. The frequency resolution is  $F_{\text{clock}} \times \text{Multiplier} / 2^{\wedge}32$ .

### Configuring the VNWA for use with the LBE-1430 Precision 1 Port GPSDO External Reference Oscillator

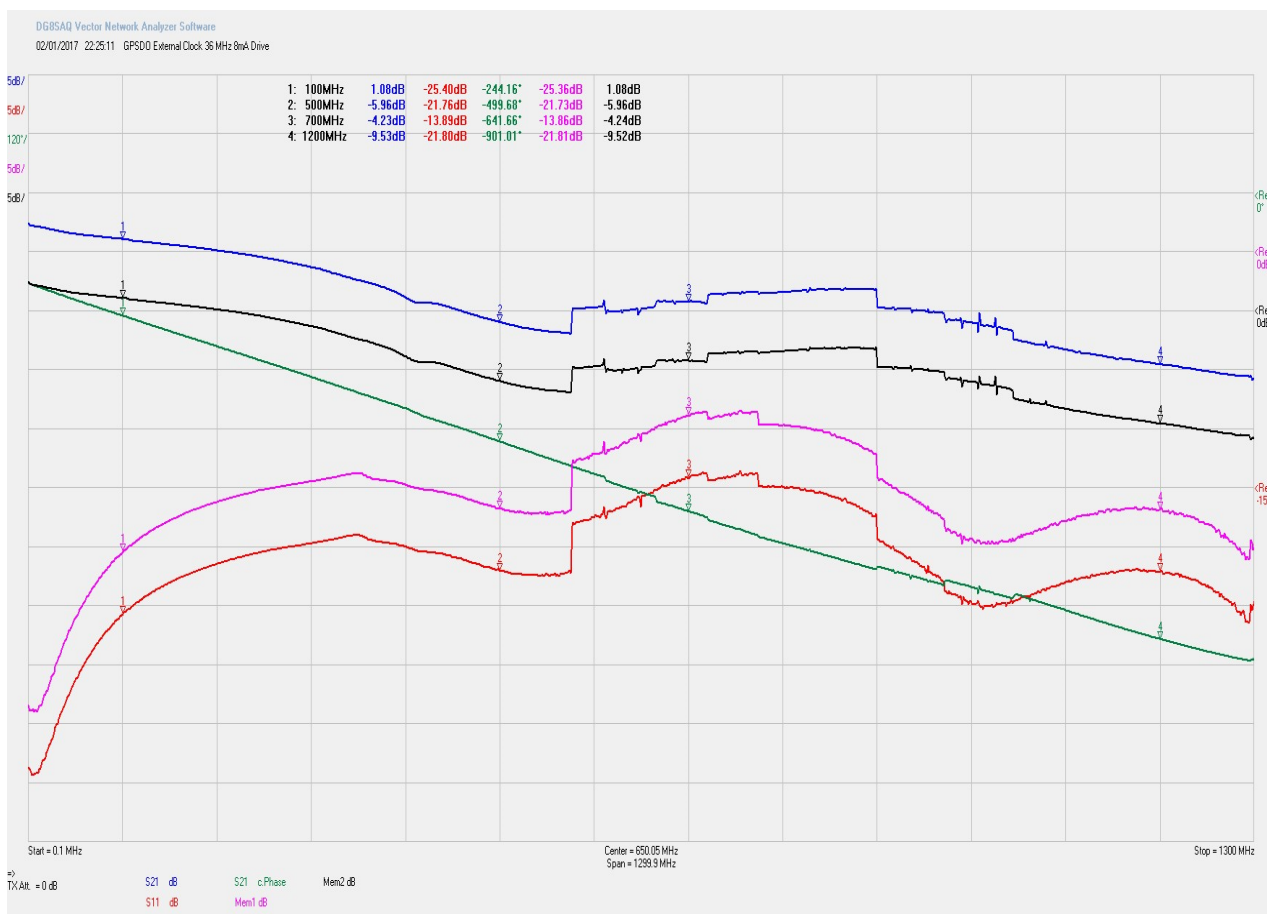
1. Run the VNWA Application and configure the USB Codecs as normal (**Options - Setup – Audio Settings**)
2. Connect the GPSDO and VNWA each to an unused USB Port, capable of sourcing 500mA from a PC
3. Connect the GPSDO to the External Reference SMA connector on the rear panel of the VNWA with a RG223 Double Screened Cable fitted with a **SMA Plug to SMA Plug**. A suitable cable is available from SDR-Kits.
4. Run the VNWA Application, Select **Options** and then **Settings** and the Tab **Instrument Settings**. Change the **Clock** source to **external**. Change the **Clock** frequency from 12 to **36** MHz as shown below



5. Download the [LBE-1420 Precision GPSDO configuration software](#) run the application and change the number in the **Settings** box to **36000000** as shown below. ( Enter CR Return will set the Reference Output to 36.000 MHz)



- Press **Set Frequency** (or carriage return) and the LBE-1420 Precision GPSDO should find the correct PLL settings typically within 10-20 seconds. Once PLL lock has been obtained the Red LED on the unit will be lit continuously.
- The VNWA is now ready to take measurements using the LBE-1420 GPSDO as external clock reference Sour
- Measurements results should be similar compared to the built-in TCXO . The picture below shows a typical commissioning measurement taken with the external LBE-1420 Precision GPSDO as clock source compared to the same measurements those taken with the Internal 12 MHz TCXO (Mem1 and Mem2).
- Measurements taken with the LBE-1420 Precision GPSDO clock should be similar compared to the built-in TCXO with the Pre-multiplier set to x3 . The picture below typically shows Commissioning test results taken with the external GPSDO as clock source against those taken with the Internal 12 MHz TCXO.



Trace 1: Blue S21 and Trace 2: Red - S11 measurements taken with LBE-1420 Precision GPSDO as External 36 MHz Reference.

Trace 4: Pink S11 Mem 1 and Trace 5: Black S21 Mem 2 were taken using the 12 MHz Internal TCXO clock with pre-multiplier set to x3 (=36 MHz). Not shown is that the S21 noiselevels are similar within a few dBs.

#### Switching from LBE-1420 GPSDO External Clocking back to VNWA Internal Clock:

- Select the **Instrument Settings** Tab and change the Clock source from **external** to **x3** or to **auto**. Change the Clock field shown in fig from **36 to 12 MHz**.
- In GPSDO Clock Configuration Menu untick the box **Enable output** to avoid the GPSDO Reference Clock interfering with the VNWA internal Clock.
- Optionally remove the RG223 Cable from the VNWA.

Link: To download the latest version of the [LBE-1420 Precision GPSDO configuration software](https://www.leobodnar.com/files/LBE-1420-Configuration-v1.06.exe)  
<https://www.leobodnar.com/files/LBE-1420-Configuration-v1.06.exe>

Link: to download Latest Firmware: <https://www.leobodnar.com/files/firmware-doctor.exe>